

Justice Laboratory Software

**Now For Agilent GCs!
Collect digital data directly!
No A/D required!**

Chrom Perfect[®] *LSi*

Single Instrument Chromatography Data System

The **Chrom Perfect[®]** brand of Chromatography data acquisition products welcomes a new member to the expanding family of quality software and hardware offerings.

Built on the foundation of **Chrom Perfect Spirit[®]**, **Chrom Perfect LSi[™]** provides the most cost effective solution for your single or dual channel GC or HPLC instrument. It's now possible to experience the industry standard in chromatography data acquisition at an affordable price.

Available now from Justice Laboratory Software, **Chrom Perfect LSi[™]** is a new PC based data system designed to cost less than an integrator, but with the same power and performance as data systems that cost three to five times more. Ideal for single instrument laboratories or mobile lab applications where performance, features and flexibility can not be sacrificed.

Chrom Perfect LSi[™] is a full featured Chromatography Data System designed and priced with the smaller laboratory in mind. Install the software, connect the Tigre II A/D to your serial port and instrument, and you are ready to start collecting data! Connect your Agilent instrument with a CAT5 or null modem cable.



Chrom Perfect LSi[™] Chromatography Data Systems include software, 24 Bit dual channel serial A/D, cables, and detailed documentation.

Available Options

- Chrom Perfect SEC/GPC Viscosity
- Chrom Perfect Simulated Distillation
- Chrom Perfect Sample Automation System for any GC or HPLC
- Chrom Perfect Analog-Out Software for Process Control
- Chrom Perfect Streamlines Multi-Port VICI Valve Control
- Chrom Perfect Instrumentation Set-point Control
- Chrom Perfect Natural Gas Reporting

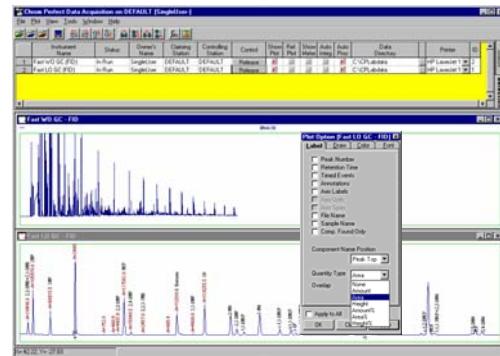
Data Acquisition

Real Time Advantages

- Integrate automatically with a fixed time interval, or click any time to trigger integration
- Display a reference chromatogram in the background
- Record observations during analysis with real time annotations
- Real time labels show elution times and amounts as the run progresses
- Unlimited downloadable user fields add key search criteria for a database

Real time integration gives users freedom to make decisions early in the run. Save time, samples, and other resources.

Method fine tuning can occur while your data is being acquired. Noise and peak adjustments can be tested and saved as you are acquiring the data.

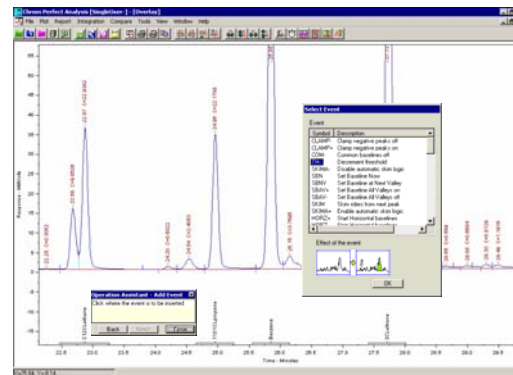


Simply right-click on the real-time plot to access real-time features.

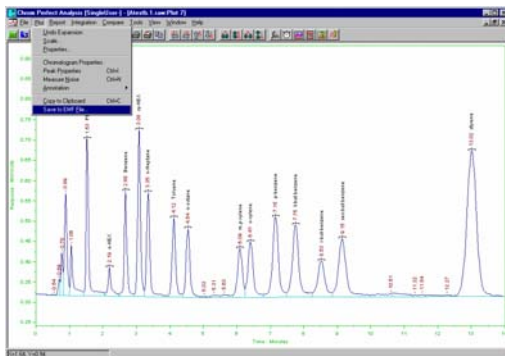
Data Analysis

Users have freedom to choose how many chromatograms are displayed and analyzed at a time. Key chromatogram information is only one right click away.

Every chromatogram displayed in the analysis program can be individually adjusted for plotting, integration, and reporting. Programs such as **Rapid Review, Batch Processing, and Summary** allow users to review, reprocess, and report data from multiple files.



Operation Assistant helps users step by step in all interactive operations such as: manual integration, annotation, calibration parameter adjustments, etc.



Easily create Enhanced Meta Files (emf) to obtain publication quality chromatogram files that work with virtually any modern desktop publishing system.

Cost Effective and Easy to Use

Fully incorporated in the **Chrom Perfect LS™** CDS is the CP Easy Starter. Users without any data system knowledge answer a few simple questions and Easy Starter creates the methods and calibrations in the background.

GLP/GMP Features

Chrom Perfect LSTM fully documents all methods, sequences, and reports including instrument run logs. These features provide a complete, unbroken link from the initial experiment to the final results.

Unique **Chrom Perfect Bound Data FilesTM** prevent overwriting data and unintended user access to files, programs, and templates.

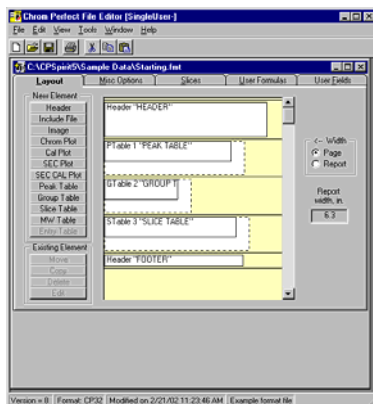
Incredible Power and Flexibility

- Use the power and freedom of **Chrom Perfect LSTM** for your lab
- The complete solution for any HPLC, GC, or CZE application
- Tigre II connects to any brand of HPLC/GC
- Tigre II A/D connects through serial port and provides single or dual channel acquisition for your instrument.
- Agilent GCs connect via TCP/IP or RS232
- The most reliable integration features
- Full custom calculations without the cost and complexity of embedded data bases
- Fastest, Easiest, and Most Complete Summaries and Reports
- Easy LIMS interface



Custom Reports

Chrom Perfect LSTM is shipped with over fifty custom report templates. Select from a broad range of reports that cover all aspects of laboratory reporting from Certificates of Analysis to system validation. All are easily modified by users. The powerful features of **ReportWritePlusTM** and the Chrom Perfect Method program allows users to produce multiple reports from a single analysis. Satisfy the needs of QA, engineering, client, and the LIMS interface with a separate report for each.



Graphically format reports without using special commands

ReportWritePlusTM

- Unlimited reporting capabilities
- Any number of reports per analysis
- Automatically create pdf files
- Rapid review of reports
- Easy data transfer of results
- Easy LIMS interface

Choice of Thousands of Chemists Worldwide

The purchase of a Chromatography Data System, no matter how large or small, is considered an investment in the productivity of the laboratory. We recognize that this investment requires confidence in a company, its products, strategy, support, and management.

Justice Laboratory Software offers the most comprehensive line of high technology software products for your Laboratory. Whether you need an XP or 2000 based client/server chromatography system or a single user basic system, Justice Laboratory Software meets the demanding needs of chromatography applications. Our products offer multi-vendor instrument interfacing and distributed data processing for complete data integration of your lab.

Chrom Perfect LS™ data systems do not require proprietary hardware data acquisition servers and are compliant with all Microsoft 32 bit ActiveX, COM/DCOM, and COM+ standards.

PC Requirements

| | |
|----------------------|--|
| Operating System | Windows 2000 Professional Windows XP Professional |
| Processor | Pentium IV and higher @ all clock speeds |
| RAM | 256-512 MB |
| CD-ROM/ DVD | 32X or higher plus a CD-RW for backup |
| Video Accelerator | 4X AGP or PCI or higher |
| Monitor | 17" FST 0.28mm dot pitch |
| Floppy | 1.44MB 3.5" |
| Ports | 1 Serial, 1 Parallel, 2 USB (1.1, 2.0 compliant), Mouse & Keyboard |

Justice Laboratory Software invites you to compare **Chrom Perfect LS™** to any data system at any cost and find out about our dedication to customer service and support. Review our consistent record providing our customers with a significant revision **every year since 1989**.

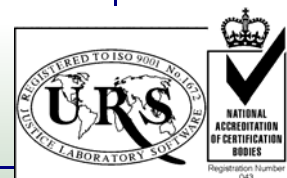
The leading independent ISO certified developer of Chromatography Data Systems.

Ordering Information

41-5000-7102 **Chrom Perfect LS™** V5 Series 32-Bit Software Suite Includes one:
Chrom Perfect Tige II™ 24 bit serial data acquisition system, power supply,
analog instrument and serial interface cables.

41-5000-2102 **Chrom Perfect LS™** for 1 HP/Agilent 5890, 6890 or 6850 Instrument, 2 Detectors
Acquires data and controls setpoints for 1 instrument. Uses one RS-232 null modem cable or
one CAT5 cable for connection from PC to instrument

Chrom Perfect LS™ is designed for applications where the user desires data acquisition and processing for a single chromatograph with as many as two detectors. Use with additional instruments requires upgrade to **Chrom Perfect Spirit®**. PN 40-0004-0000



Chrom Perfect Spirit® and **Chrom Perfect®** are registered trademarks of Justice Innovations Inc. Windows 2000 and Windows XP are registered trademarks of Microsoft Corporation. Pentium IV is a registered trademarks of Intel Corporation.

Justice Laboratory Software

A Division of Justice Innovations, Inc.

US
TEL (973) 586 8551
www.justiceinnovations.com

EUROPE
TEL +44 (0) 1337 828404
www.justiceuk.com

Detailed List of Features

Chrom Perfect

Operating System Support

Windows 98SE, Me
Windows 2000
Windows XP Pro

ISO 9000 Certified, FCC, CE approved

General

Country of Origin: USA
Shipping date of first revision of product: 1989
Manual Hard copy : Yes
Manual as help file: Yes
Max Number of instruments/per/workstation: 1
Max Number of detector channels/workstation: 2
Number of Active X objects available to user: 34
Instrument interface protocols supported: RS232

Implemented Technologies

Client/Server
COM/DCOM
Active X

GLP/ 21 CFR Part 11 Implementation Tools

Enable Logon and Password
Password Time out
Enforce system wide event logging
Define all page set ups
Serializes printed reports
Support of group rights
Memberships
Password selectable rights
User specific directory paths6060
Station Level Logging flags
View Data error alarm log files
Change Station Specific hardware
Claim control instruments
Download instruments
Change run Times
Operate relays manually
Write Cal Files
Write Method Files
Write Raw files
Write Report Format Files
Write instrument Control files
Write Sequence Files
Write SEC files
Allow manual integration
Modify Raw data settings
Modify Calibration settings
Modify Method Settings
Import Data
Export Data

Print Reports
Dismiss alarms
Create artificial Raw Files
Unique user profiles for each user
Enforce change control

Data Acquisition

24 Bit dual channel external serial interface
Delta-Sigma
Linearity 0.002% of full scale
Input range +/- 0 to 1 Volts
.001 to 15 data points per second
Single or dual channel
8 TTL outputs
Run starts with hardware or software initiation
Multi-national power supply
28 integration timed events
Any number of user programs enabled before, during, or after data acquisition,

Calibration Routines

1000 Named components with up to 60 levels
Fit types: Point to Point, linear, quad, cubic, power, avg cal factor
Fit weight: Equal, Inv X, Inv sq X, Inv Y, Inv sq Y
Origin treatment: force, ignore, extrapolate
Internal, external standard, calculations
Statistics include: Coefficient of determination, avg cal factor, average error, percent RSD
Group calibrations and unlimited reference peaks

Peak Integration Features

Automatic Integration

Peak Width
Threshold
Area Reject
injection Volume
Sample weight
Dilution Factor
Internal Standard Amount

Manual Integration

Move Peak Start/End
Add peak
Delete Peak
Split Peak
Fuse Peak
Merge /Break Baseline
Move SEC Baseline Start end
Insert Events from interactive list
Auto correction On/Off

Clamp Negative Peaks on
Clamp Negative Peaks off
Force Common baselines on
Force Common baselines off
Increment Threshold
Decrement Threshold
Enable automatic skim logic
Disable automatic skim logic
Double peak width
Half, peak width
Force Common Base lines
Invert Negative Peaks On
Invert Negative Peaks Off
Measure and update threshold
Negative Peak detection on
Negative Peak detection off
10 Groups of Peak selection
8 TTL events as necessary
Retention time labeling on/off
Set Base line all Valleys on/off
Set Base line next Valley
Set Baseline Now
Show Data as Points
Show Peak Tic Marks
Skim Riders from Next peak
Split Peak
Start and end Horizontal Base line
Start and Stop Peak Sum Window
Start and Stop Peak Integration
Menu or mouse drag and drop
Event Deletion
Interactive Timed-Event placement

Batch Reprocessing

From Sequence or list
Allows Automatic Smoothing
Allows Automatic Baseline subtraction
Allows Automatic Bound files
Allows Automatic ASCII files
Allows Automatic Reports
Allows Auto AIA CDF / Net CDF
Allows Auto Z file for LIMS
Allows Auto Append report
Allows Automatic Cal updates
Allows Automatic Cal reports
Allows User programs

Send Reports to File

Printer Screen All
as ANDI, AIA, CDF, and Net Cdf
ASCII, selectable format, CSV
Single line Tab or comma delimited
Concatenated files

Windows emf (enhanced meta file)
PDF files
CP Raw and or Bound™ files

Rapid Review of reports without printing

View all Chromatograms
View all Reports

Summary of Multiple analysis up to 1000 runs

Amounts
Amount %
Area
Area %
Ret. Time
Height
Height %
Response Ratio
Summary File list can come from:
Lists
Previous List
Sequence
Calibration File
Components to Summarize from:
Largest
Selected peak totals
Group Totals
Summary Styles
Tables=Components
Tables=Multiple Components
Table= Items
Component names in headers

Real time Status Displays, selectable

Instrument
Controlling Station
Detector
Status
Sample
Raw File
Method file
Cal, file
Run Time
Response
Sequence
Sequence Number
Vial Number
Relay Position
Reference Chromatogram
Automatic Name
Real time Integration

***And Much More.....
Compare this list of features to any
other Chromatography Data System
and "Demand Justice"***